

One Network. One Identity. One AI That Knows You—from Birth.

A bio-specific L1 where humans, encrypted health data, AI agents, labs, and IP live as programmable on-chain actors.



DEPH.

THE SOVEREIGN BIO-DIGITAL NETWORK

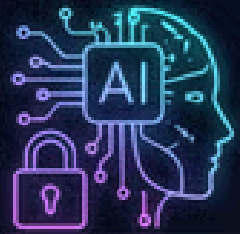
Document Type: Whitepaper / Investor Deck
Specification: v3.0
Status: Public Draft – Live Network

EXECUTIVE SUMMARY: WHAT DEPH IS



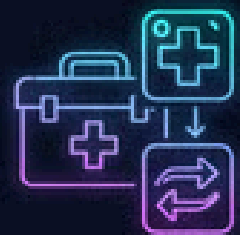
1. Sovereign Bio L1

Base layer for HealthID, consent, and settlement of biological AI.



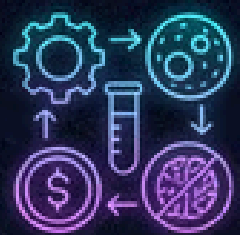
2. Agent-Native Data Pool

Encrypted lifetime vaults that agents query, not scrape, for longitudinal context.



3. Real-World Product Rails

Labs, kits, and health apps plugging into shared logistics and payments.



4. Real Yield from Biology

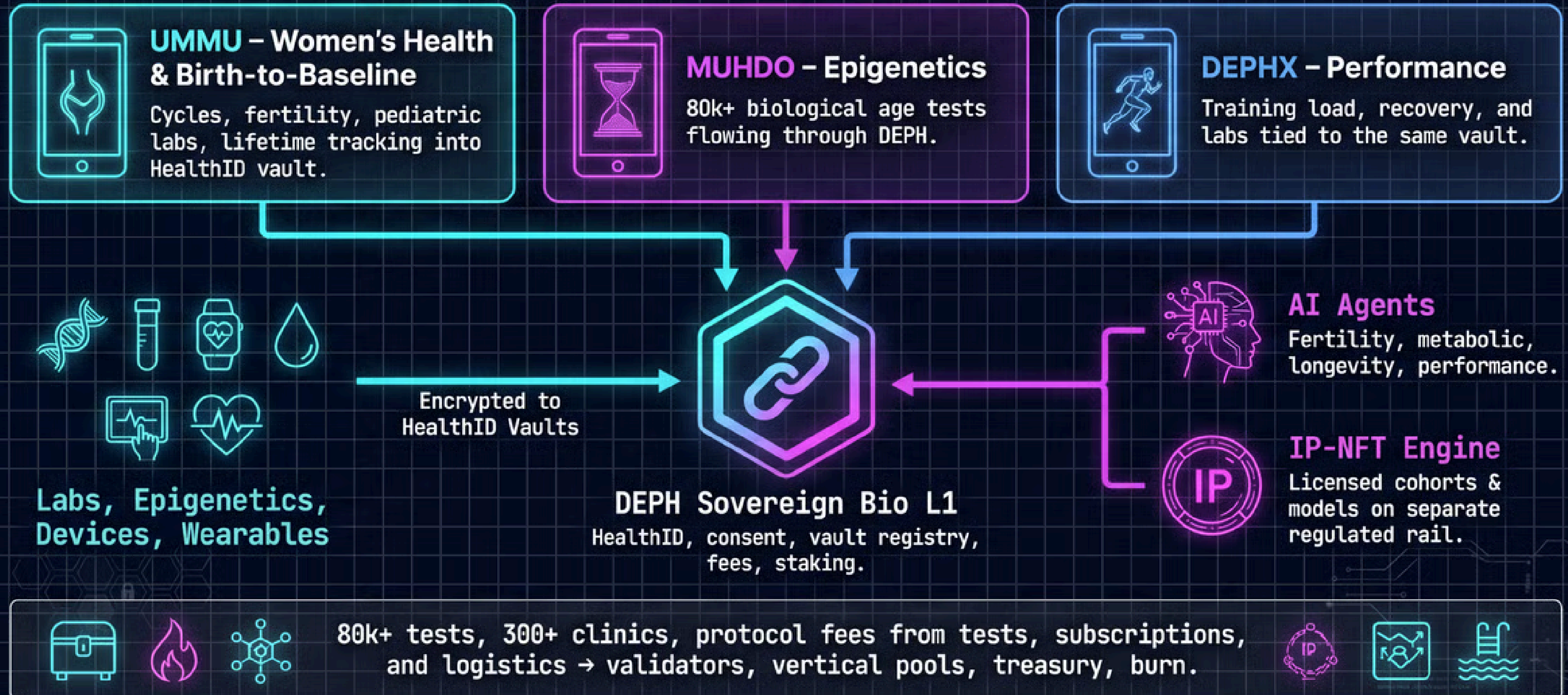
Validator and staker rewards from fees on tests, subscriptions, and queries.



5. Regulated IP Engine

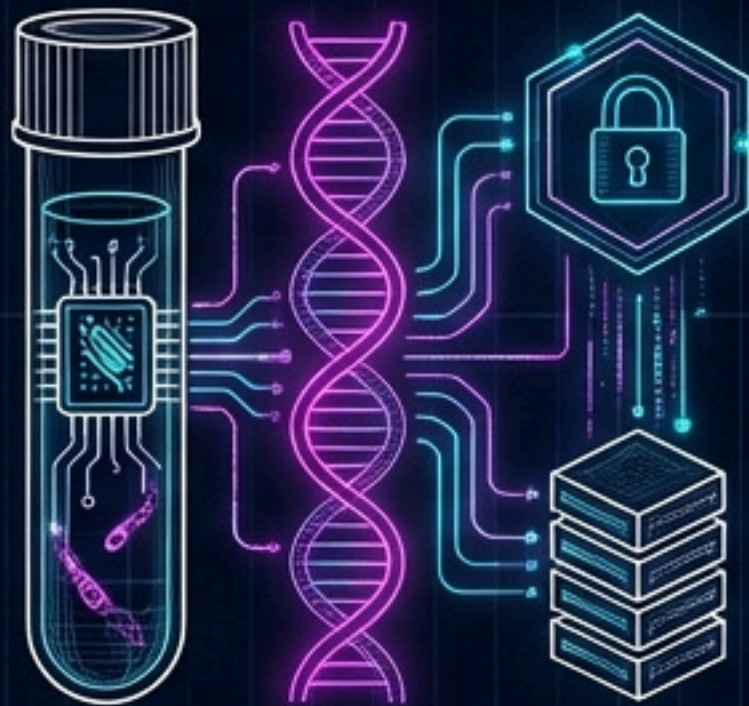
Separate, compliant IP-NFT rail for licensing biological models and cohorts.

DEPH Ecosystem: Live Rails Today



Agent-Native Network Design, Not DeFi-Retrofit.

Signal Over Noise



Prioritizes longitudinal, lab-anchored data over noisy self-reports to maximize agent quality.

No Passive Yield



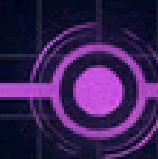
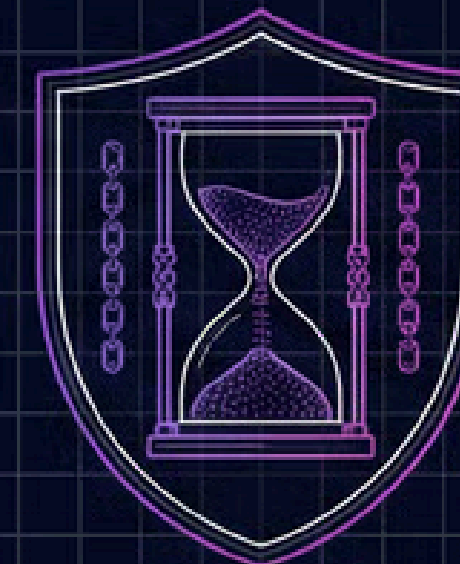
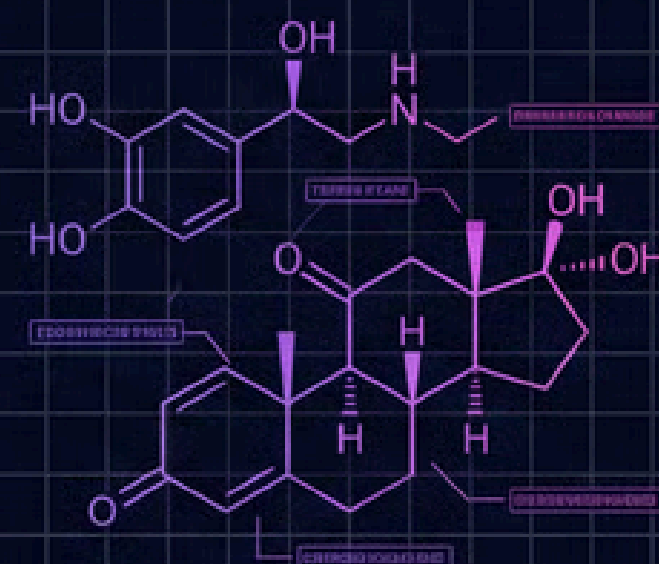
Rewards accrue to validation, compute, staking, and logistics work—no protocol-guaranteed farms.

Infrastructure Only



DEPH provides the rails; apps and agents own UX, brand, and pricing.

Imagine One AI That Knows Your Biology For Life



Childhood/Birth:
First DNA test

Teenager/Youth:
Injuries & Sports metrics

Adult: Fertility,
Metabolic, Mental Health

Later Life/Elder:
Epigenetic age & Longevity

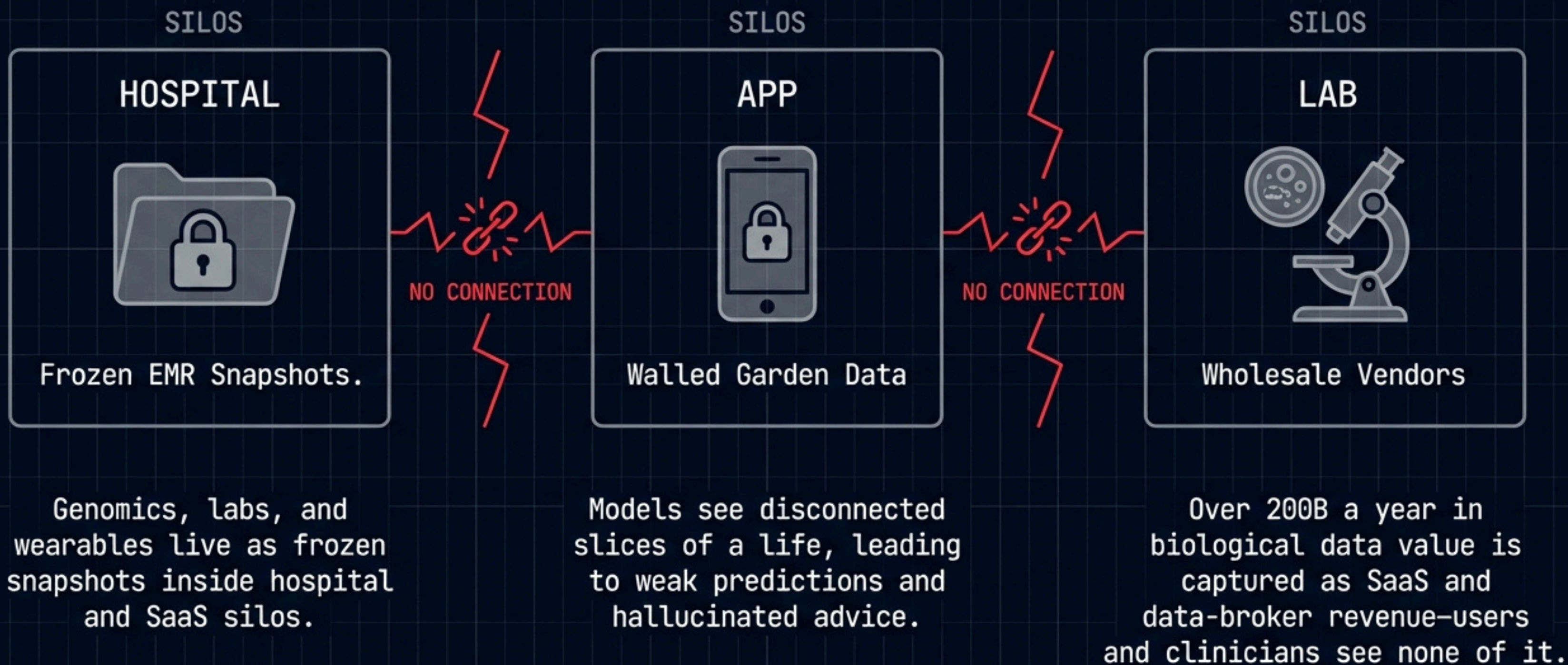
Shifts from **siloed snapshots** to **cooperating agents** that all write to a **single lifetime HealthID vault**.

Accumulates DNA, hormones, labs, and device streams into one coherent biological narrative.

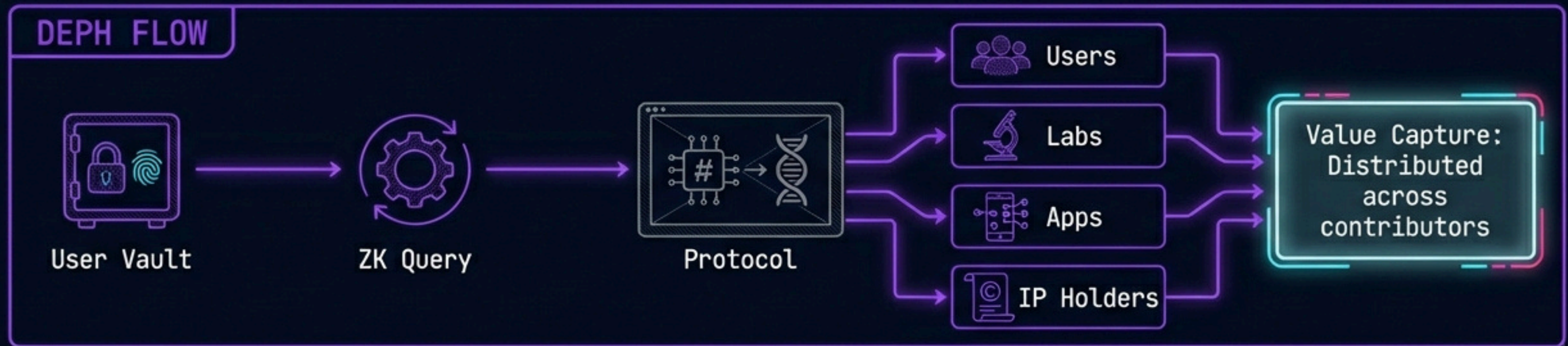
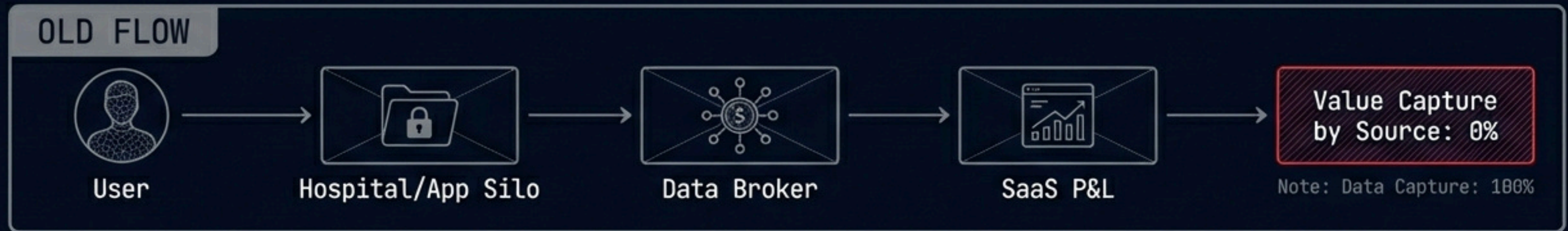
Enables one lifelong biological AI per person, reasoning over decades of context—not fragments.

All fused into **one encrypted** HealthID vault, so one AI can grow up with you—**trained only on your data**, governed by **your rules**, not by a platform.

Today: Frozen Data, Weak AI, Zero User Upside



200B+ Biology Mispriced as SaaS Exhaust.











DEPH Flow distributes value via on-chain rules.

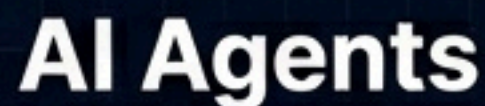
The Current Stack Is Misaligned By Design



[No neutral substrate → hoarding, regulatory clampdowns, slow innovation]

From Platform Extraction to User-Sovereign Rails.

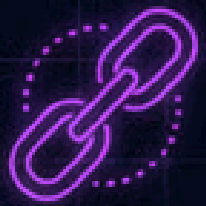
	STATUS QUO	DEPH
Data Custody	Platform-owned, off-balance sheet data hoards. 	User-owned vaults anchored by a cryptographic HealthID. 
AI Potential	Isolated slices, low signal, hallucinations. 	Full-timeline context, continuously learning agents. 
Privacy	Opaque resale and broker markets. 	Zero-knowledge proofs, PHI off-chain, compute-to-data. 
Economics	No rights, no revenue to contributors. 	Programmed splits for users, labs, apps, stakers, and protocol. 


$$\mathbf{H}_{\text{eff}} = \left\{ \begin{array}{c} \text{Diagram of a cube with internal connections} \end{array} \right\}$$


The diagram illustrates the flow of information. On the left, a window titled 'K-200' contains a drawing of a person. An arrow points from this window to another window titled 'K-200' which contains a form with several lines of text. A second arrow points from this form to a document titled 'CONTRACT' which also contains several lines of text. A pencil icon is positioned to the right of the contract document.



What the World Is Missing.



- A shared rail to coordinate labs, clinics, devices, and AI around one **person-centric dataset**



- A standard for running computation on private health data with **mathematical confidentiality (ZK compute-to-data)**



- An economic model where users, labs, and builders **share network upside** instead of competing for it



- The **infrastructure layer** that unlocks **fertility, longevity, mental health, and metabolic verticals** on one rail

The Bridge: Web2 Utility to Web3 Sovereignty.

Web2 User
(The Patient)



Pays via Credit Card,
seeks health insights.



Web3 User
(The Governor)



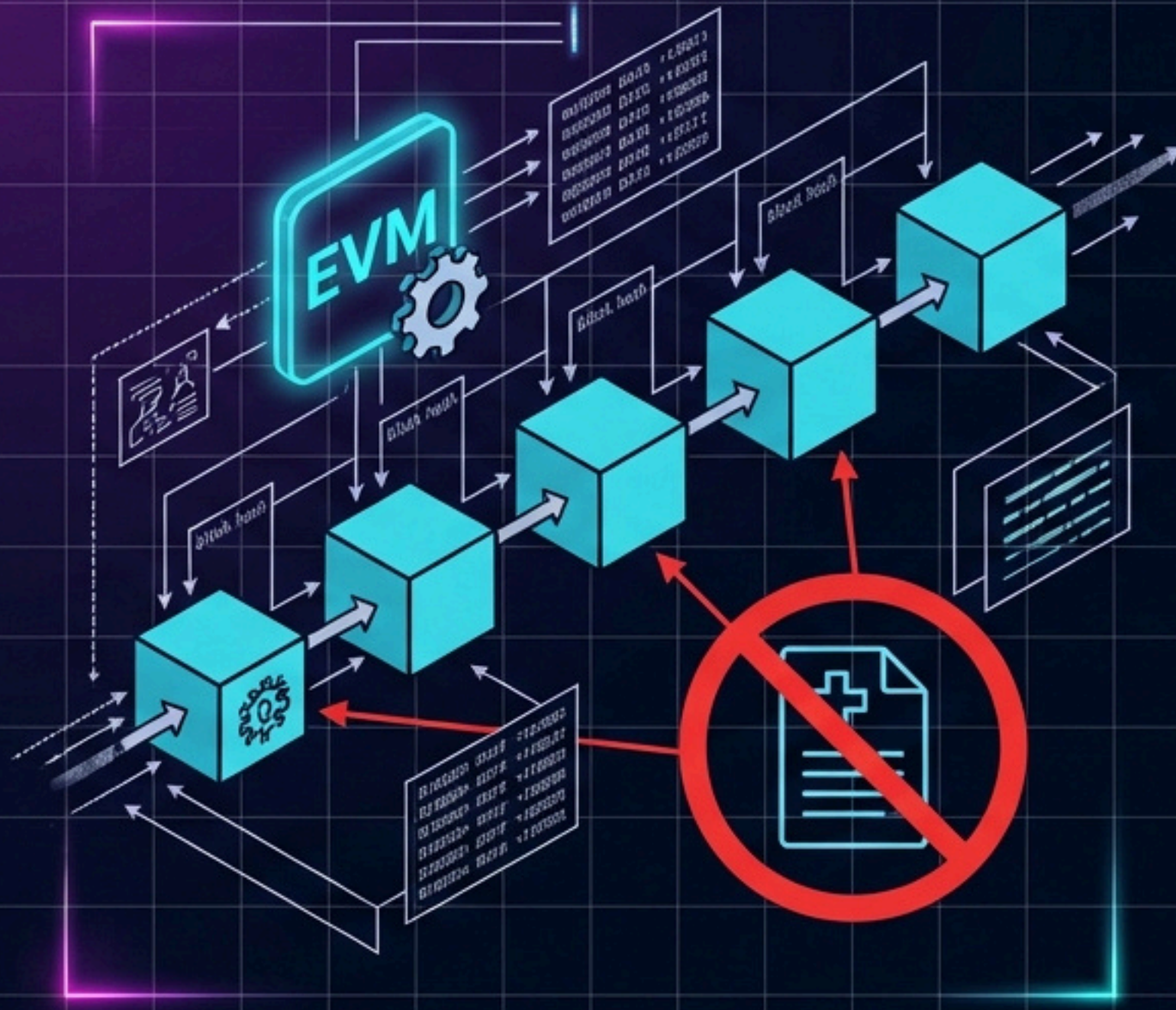
Holds DEPH, secures
chain, votes on upgrades.

Bridging easy UX with sovereign backend infrastructure.

The Bio-Digital Stack: From L1 to Agents.



The Bio-Specific L1: Architecture & Specs.



EXECUTION: EVM-compatible L1 dedicated to biological workloads; contracts manage HealthID, consent, fees, staking, IP-NFTs.

CONSENSUS: Proof-of-Stake with BFT finality; validators produce blocks and verify ZK proofs; blockspace priced for lab queries, not memecoins.

STATE MODEL: On-chain holds IDs, consents, fee flows, staking, IP positions; off-chain vaults hold PHI and heavy clinical files referenced by hashes and pointers.

CRITICAL RULE: Rule: No PHI ever lands on-chain—enforced at protocol level, not left to apps.

Four Crypto Primitives Wire the Network.



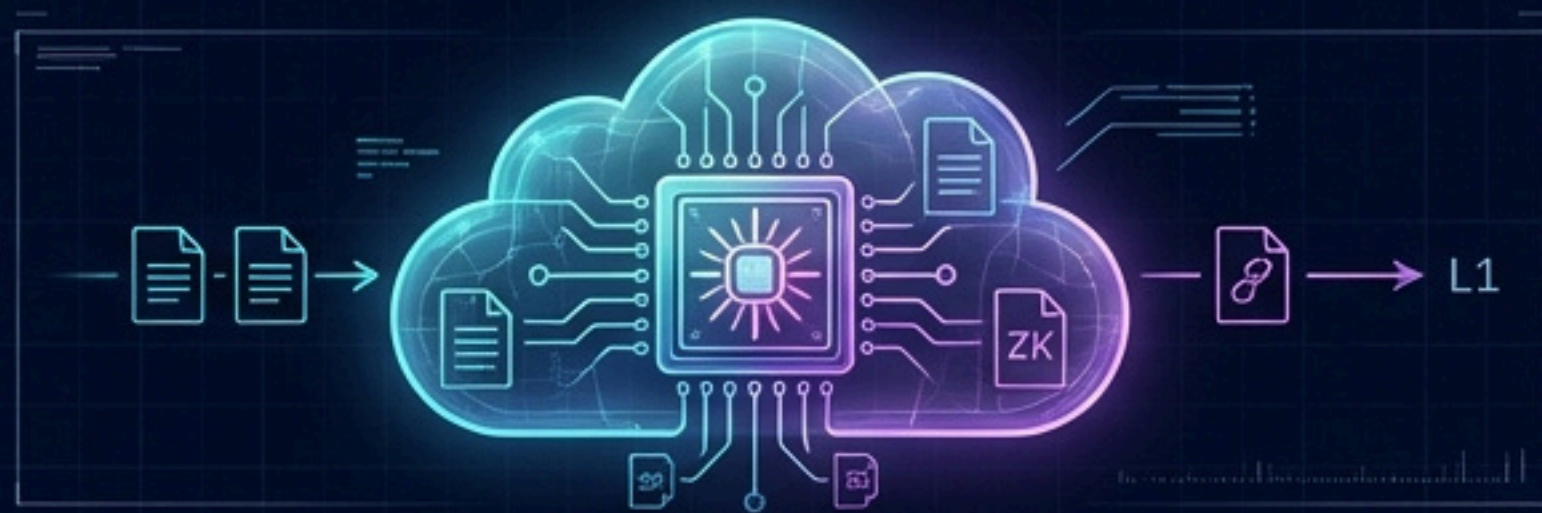
1. Identity & Vault

Per-person HealthID plus encrypted vault as the base state object for a lifetime of biology.



2. Consent as Code

Smart contracts expressing who can query what, for which purpose, for how long, and on what revenue splits.



3. ZK Marketplace

Compute-to-data market where queries and training jobs run inside vaults; only proofs and results touch L1.



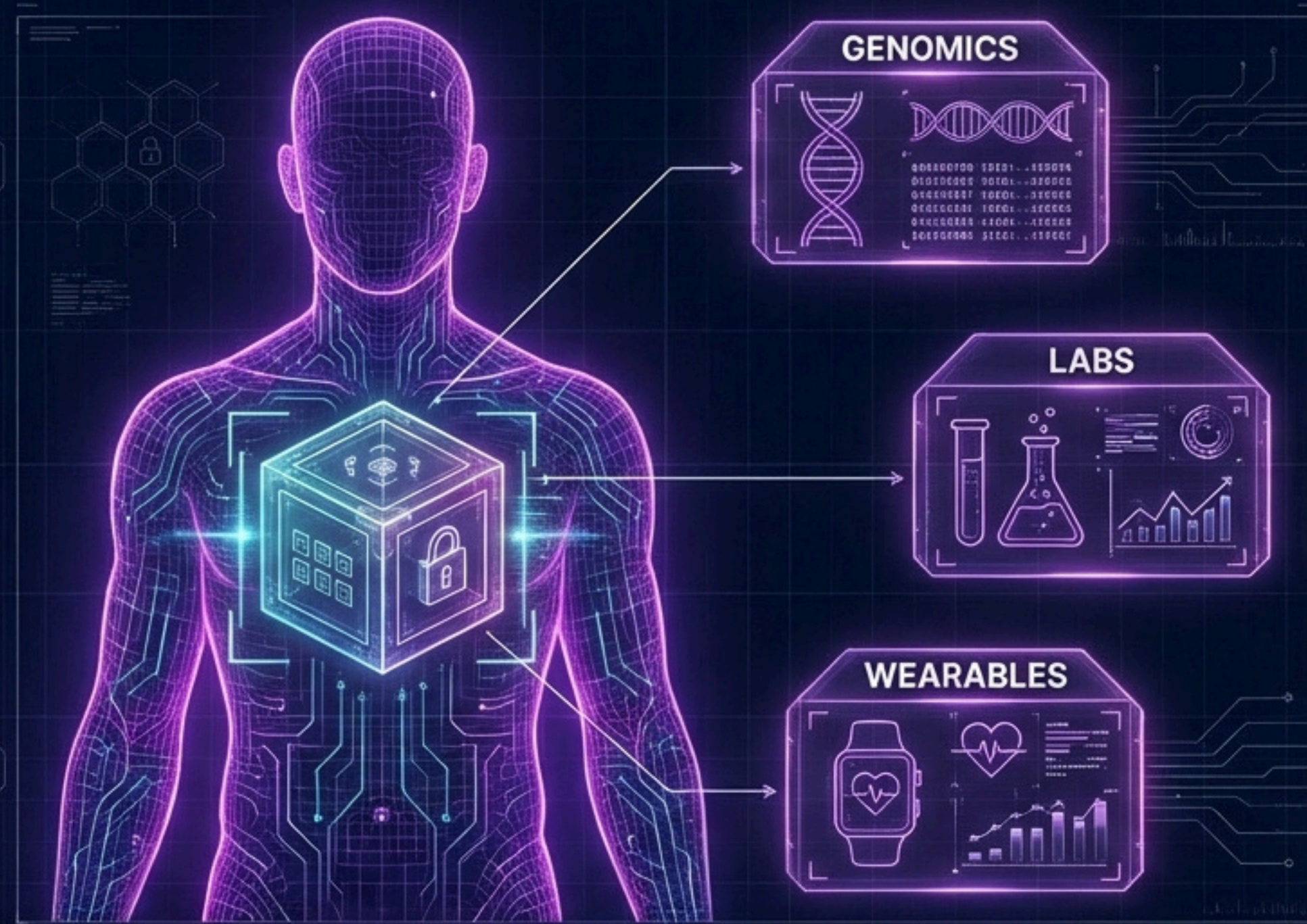
4. Economic Layer

Protocol templates that route every biological event's revenue to users, labs, apps, stakers, and treasury.

HealthID & Vault: The Atomic Units of Sovereign Biology.

HealthID:

A cryptographic identity representing one human lifetime, independent of any clinic or app.

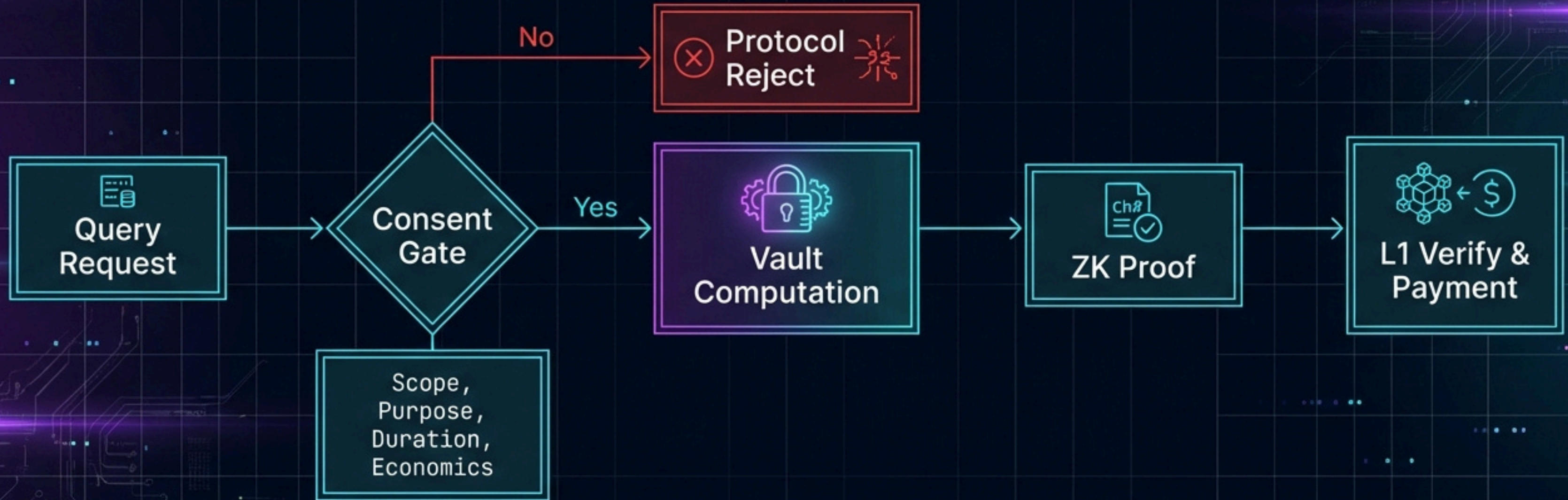


Vault:

FHIR-compliant encrypted storage bound to the **HealthID**, holding genomics, labs, wearables, and **clinical notes**.

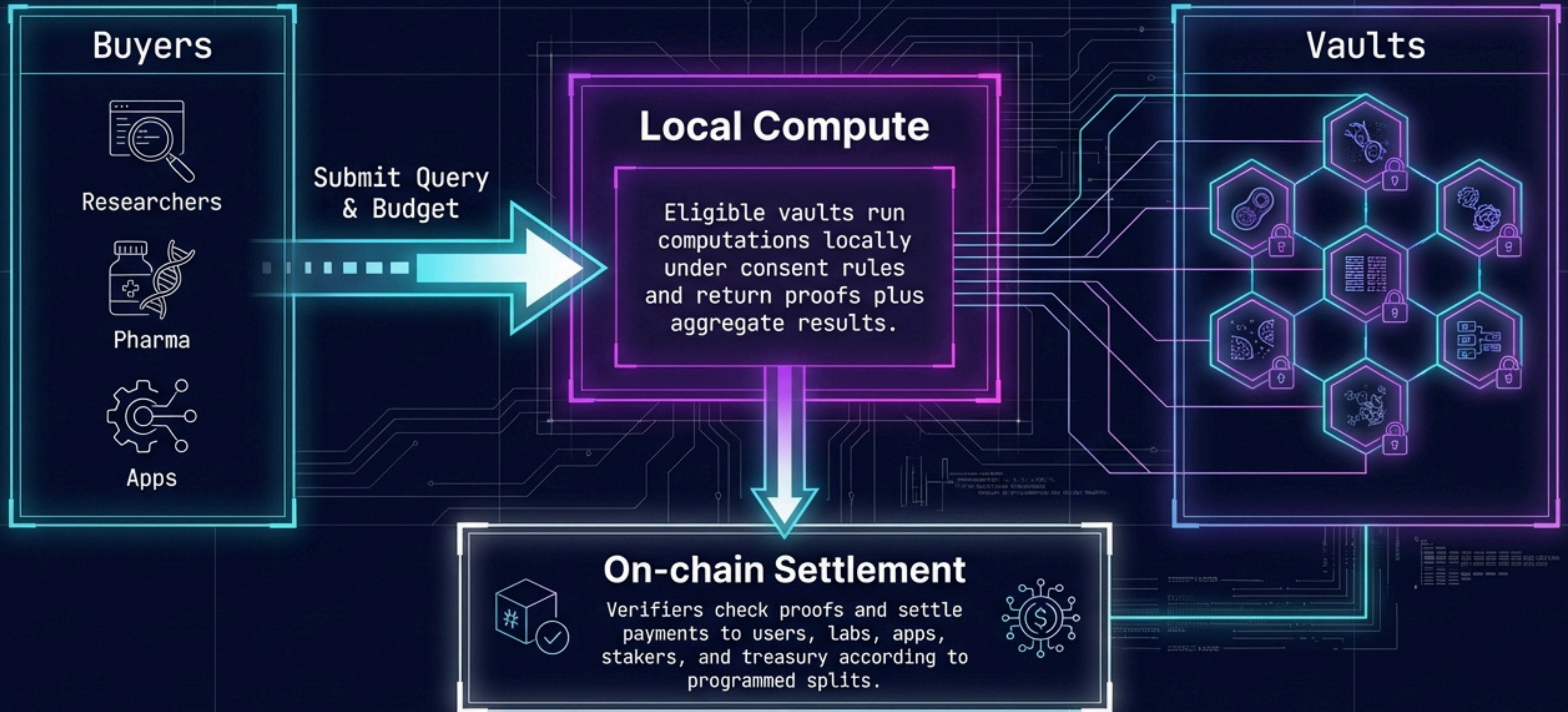
The chain maintains bindings between HealthID and its consents, balances, and participation—never raw clinical data.

Consent as Code & ZK Queries: Enforced in Hardware and Math

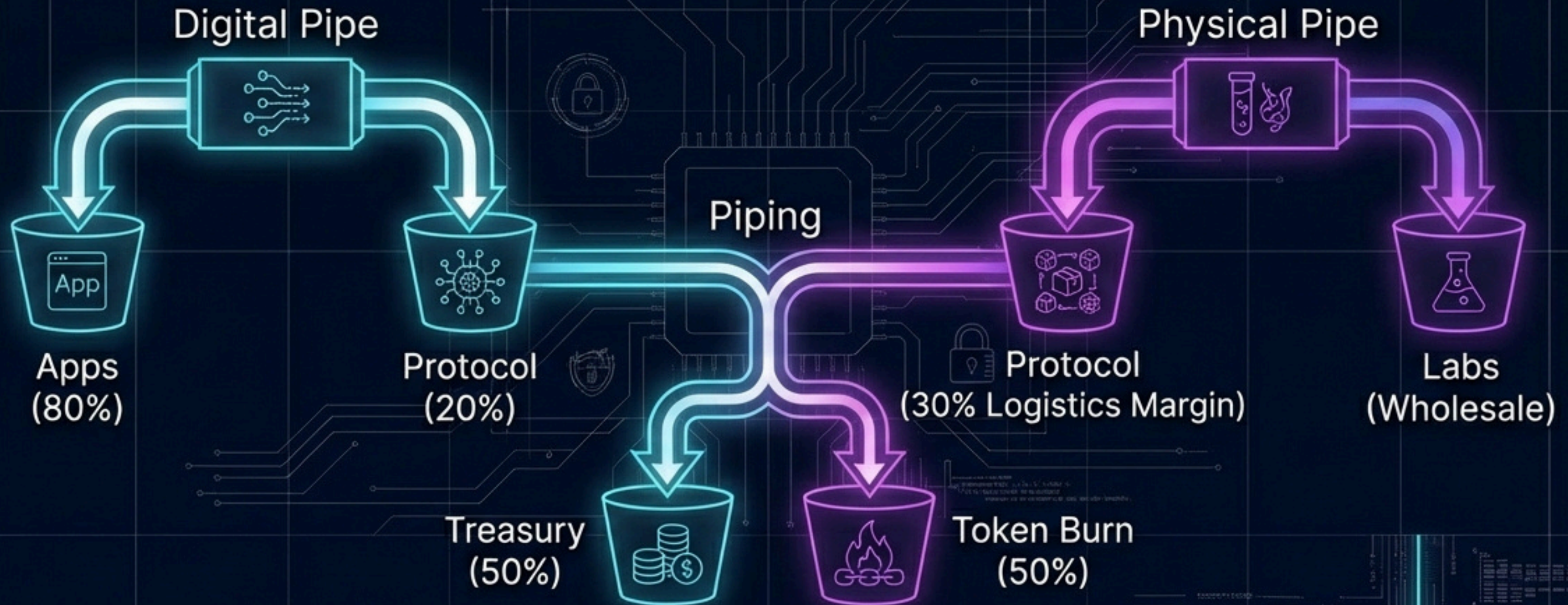


The network only sees hashes, pointers, and proofs—not PHI.

ZK Marketplace: Send Compute to Data



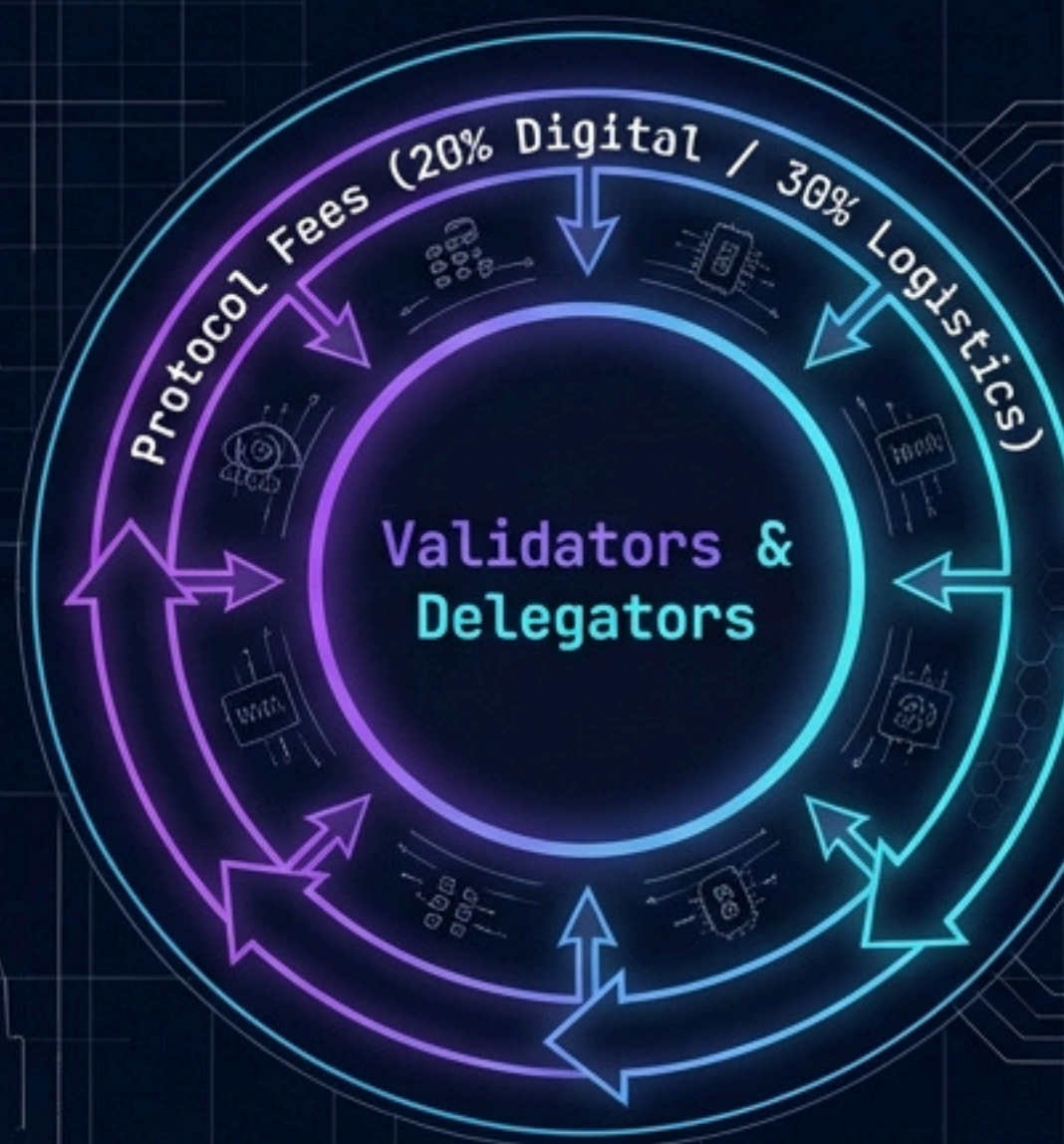
Economic Layer: How Biology Becomes On-Chain Cashflow



Across both pipes, protocol revenue itself splits 50/50 between treasury (growth) and token burn (scarcity).

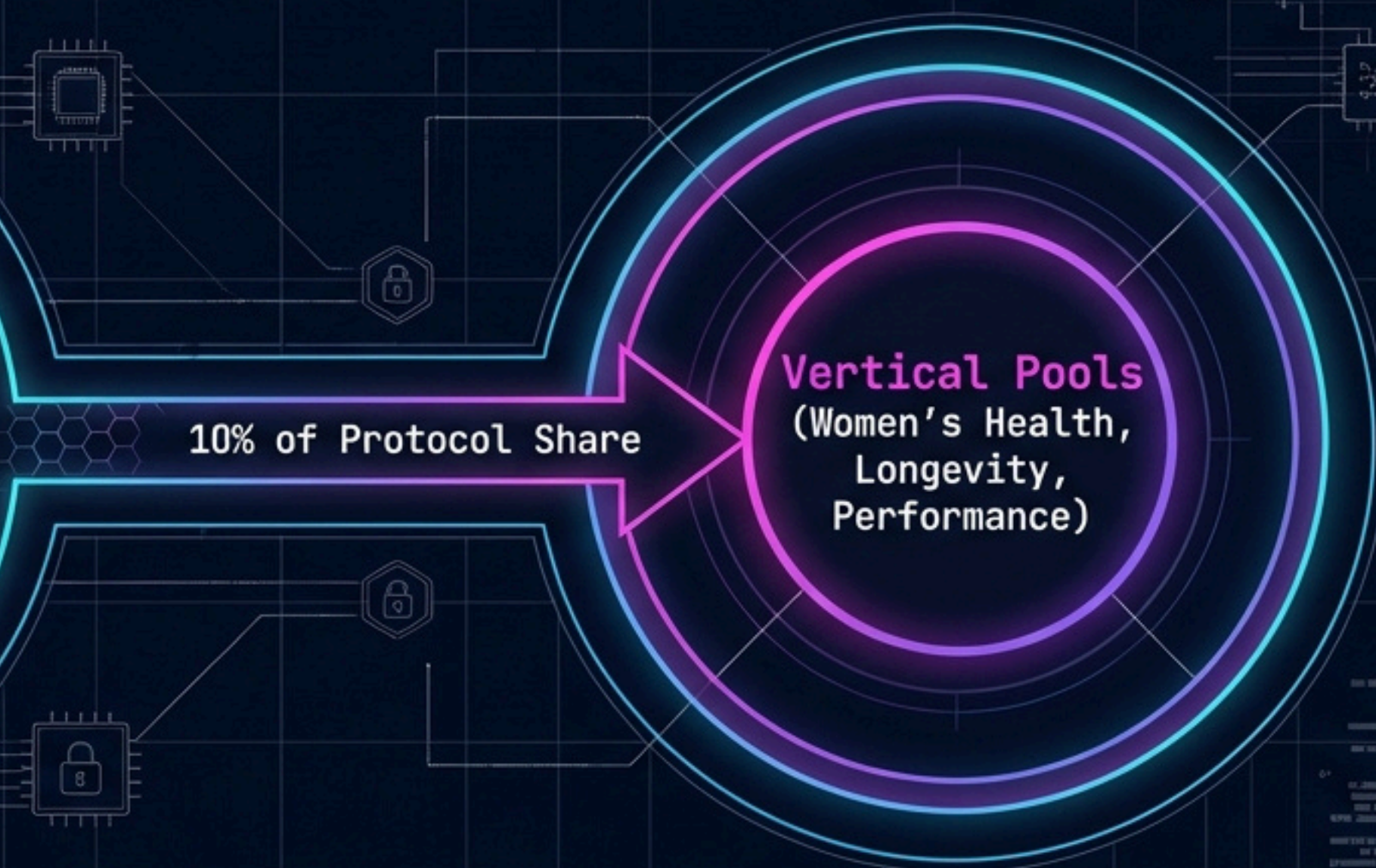
Staking: Real Yield From Real-World Biology

L1 Staking



Rewards from fees, not
inflationary emissions.

Vertical Staking



Stakers earn DEPH in proportion to
stake and time; if a vertical
underperforms, reward flow contracts.

Governance & DAO: Who Decides What Runs on the Rail



Tokenholder DAO

Governs protocol upgrades,
fee parameters, treasury



Launchpad Council

Elected delegates & experts.
Reviews new apps/verticals.

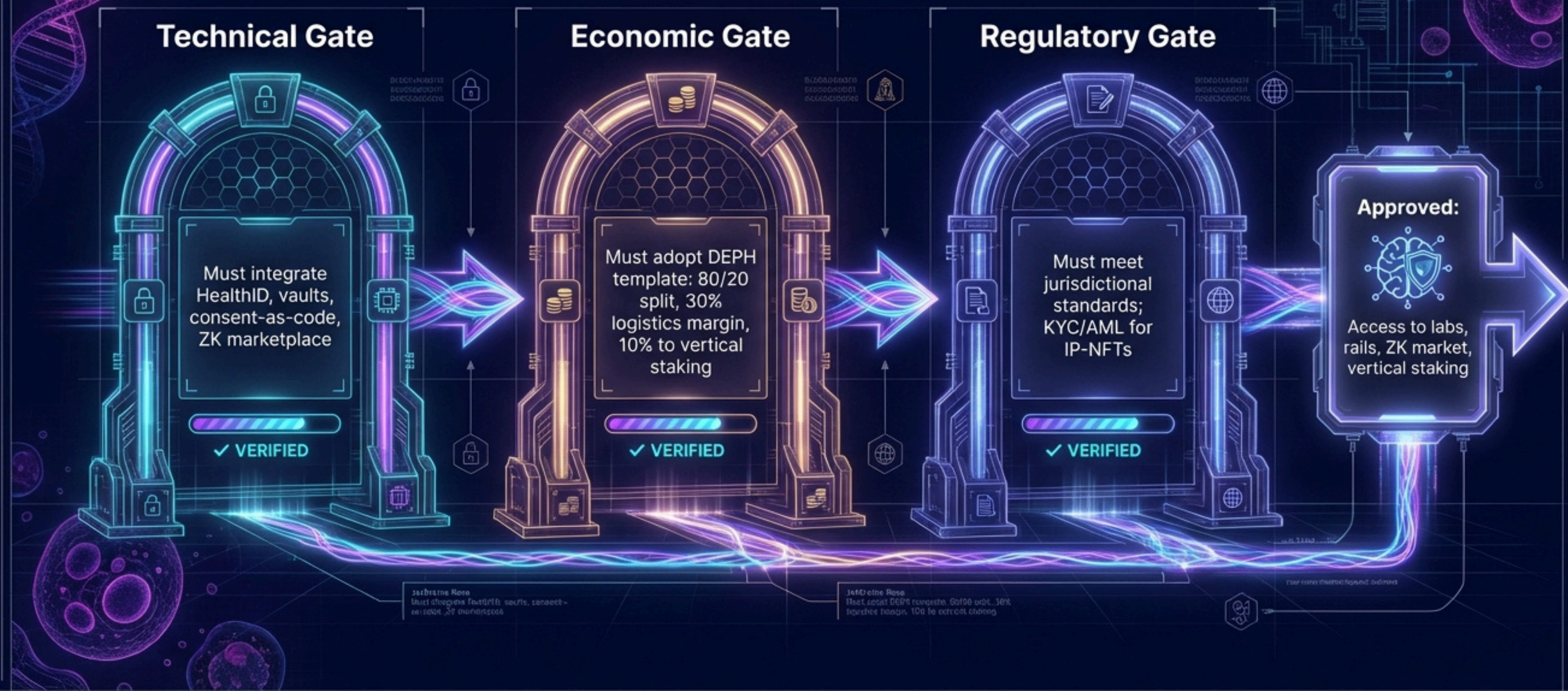


Clinical & IP Committees

Domain specialists. Review
model evidence & IP-NFTs.

Separation of Concerns: The DAO governs rails and economics; expert committees govern clinical quality and IP; both map to on-chain contracts.

Launchpad: Curating Apps, Verticals, and IP Rails



Vertical Rails: Three Live, Many in the Pipe.



Women's Health (UMMU + Sarah)

Tracks cycles, mood, hormones. Sarah flags issues; outcomes train fertility IP.



Epigenetics (MUHDO + Bio-Age Bot)

Runs epigenetic tests; computes biological age. Bot learns interventions.



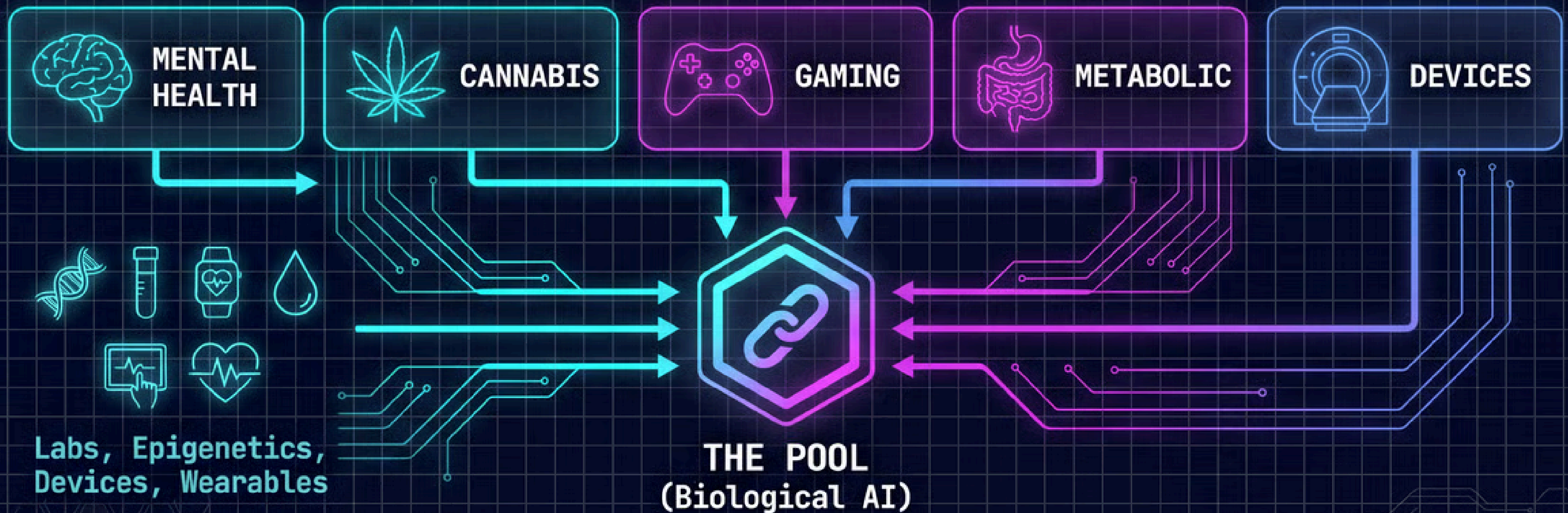
Performance (DEPHX + Coach X)

Combines genotype, training logs. Coach X builds genotype-specific IP.

Future Verticals: Mental Health, Metabolic Health, Pediatrics & Pregnancy.

MULTI POOL: VERTICAL EXPANSION & POOLED INTELLIGENCE

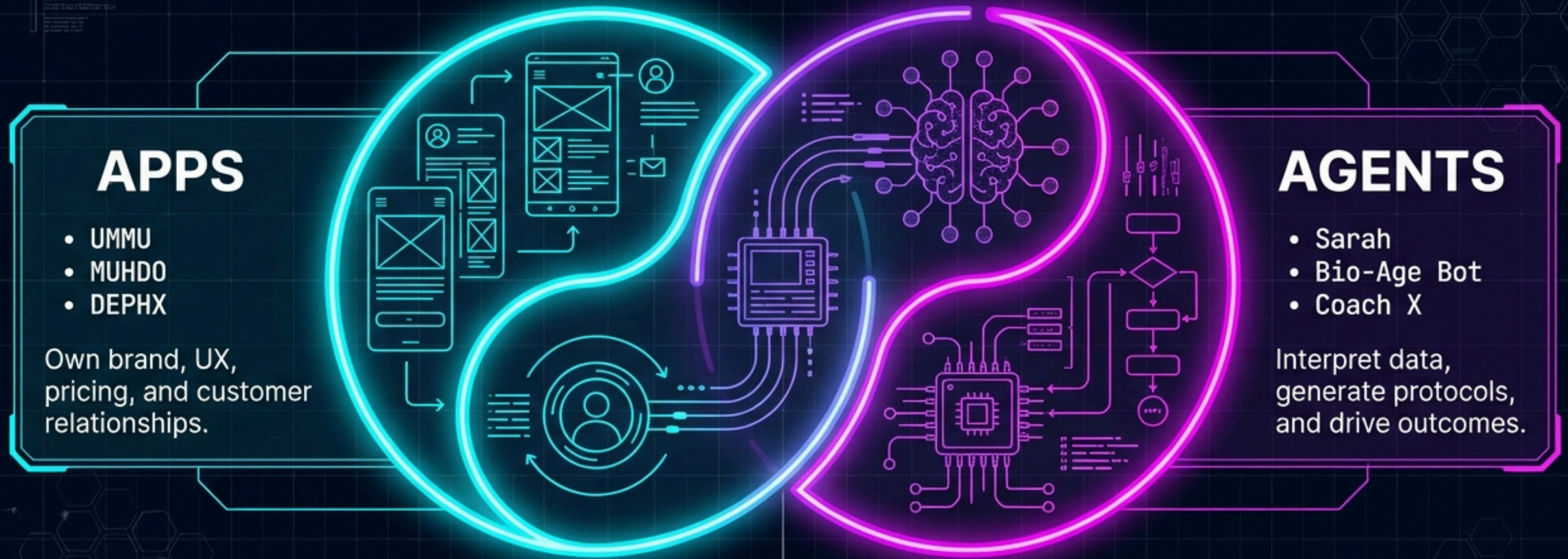
Each new vertical enriches the central repository, creating a denser, more valuable dataset for authorized researchers.



80k+ tests, 300+ clinics, protocol fees from tests, subscriptions, and logistics → validators, vertical pools, treasury, burn.

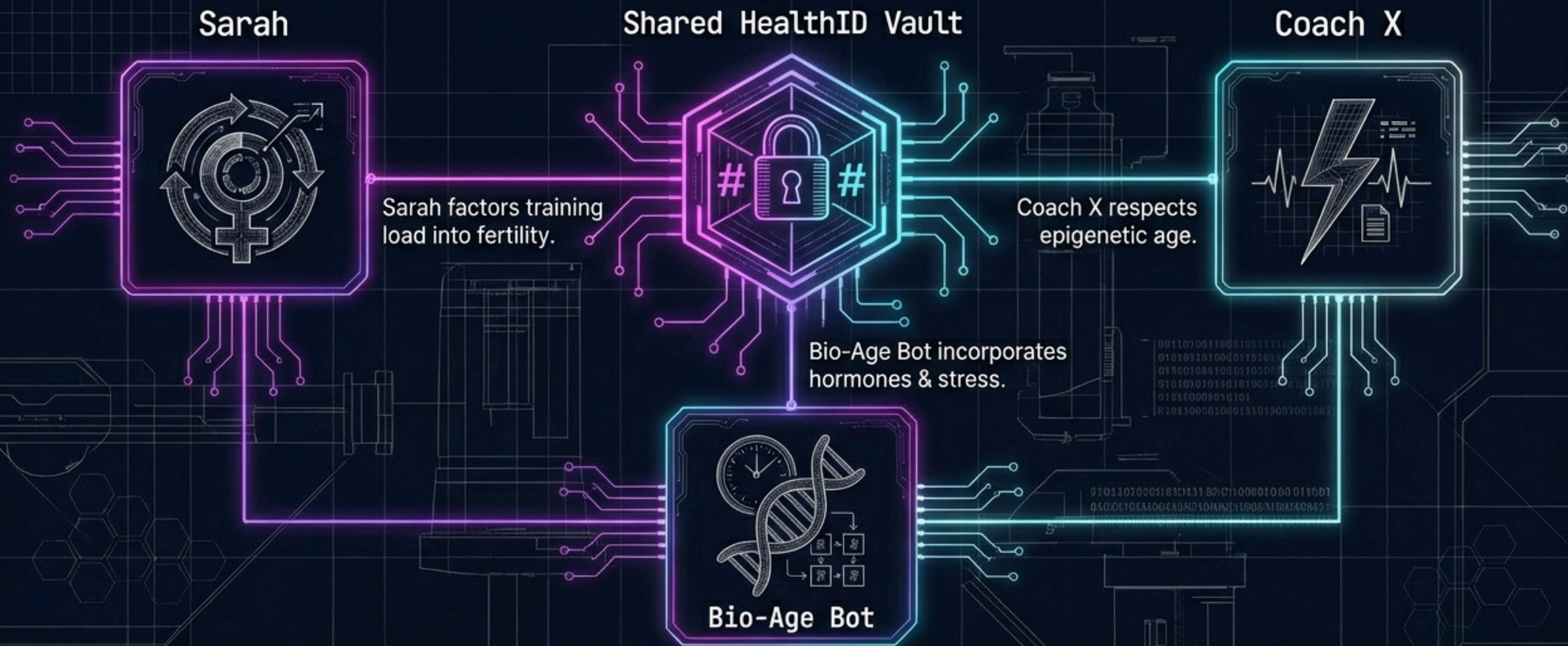


Apps Own Demand; Agents Operationalize Intelligence



Builder Value: Apps plug into identity, labs, consent, and settlement on day one—no need to build infra. They focus on UX.

Cross-Agent Collaboration: One Vault, Many Agents.

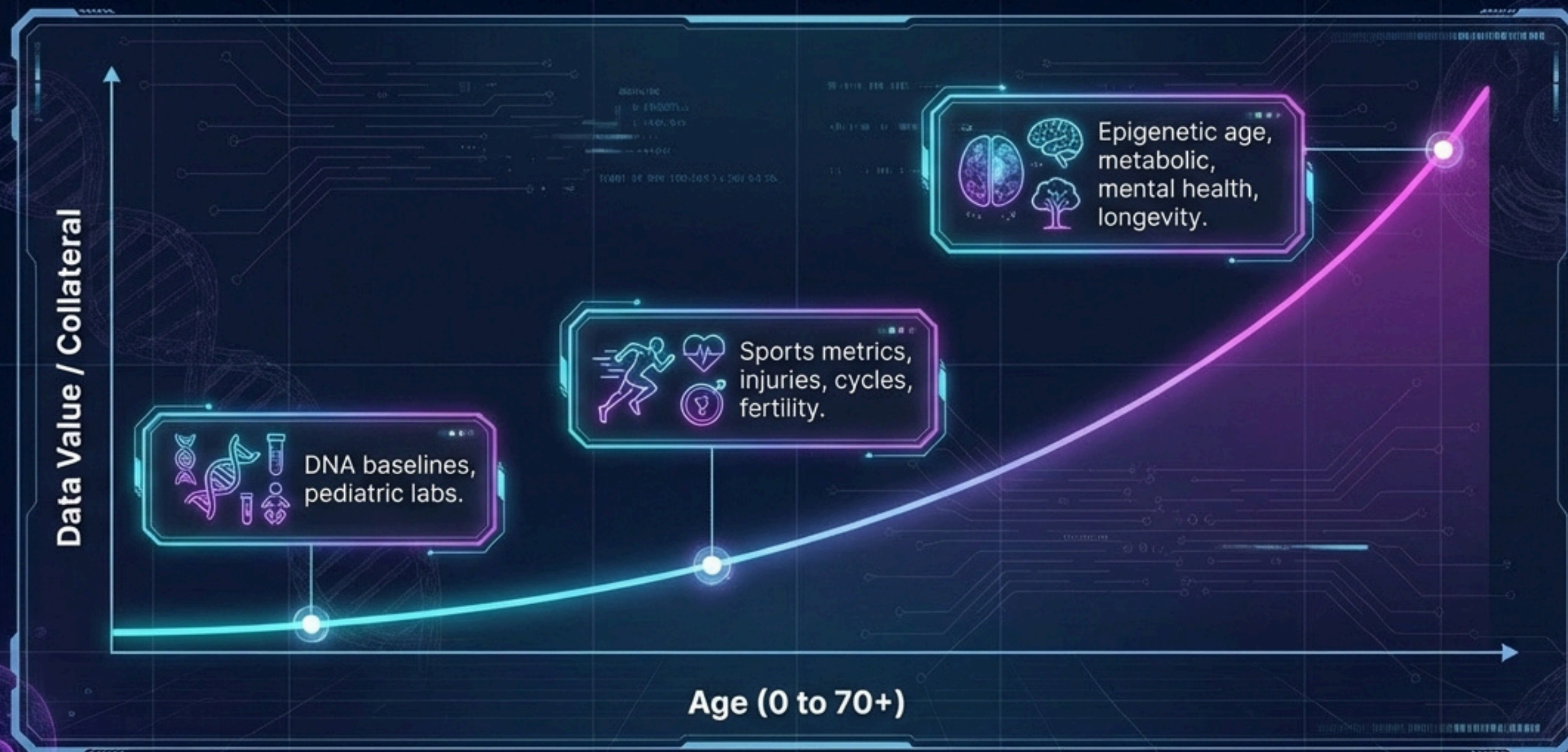


Cross-domain context is a native property of the rails, not a post-hoc integration.

One Loop: Test → Insight → Action → Retest.

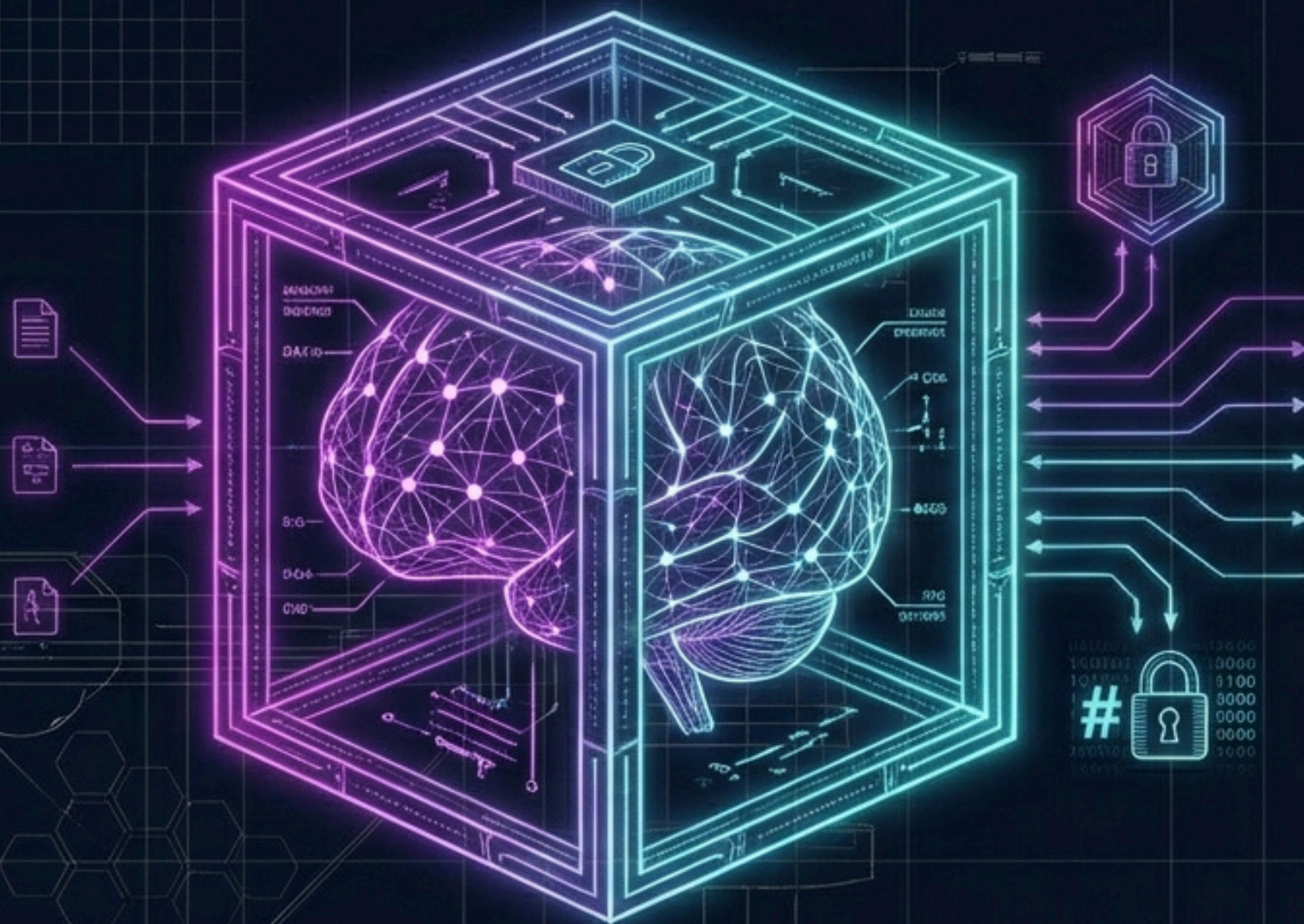


One Vault, Compounding Data – The New Collateral.



The information-per-person curve rises every year;
DEPH is the chain that prices and secures that collateral.

IP-NFT Engine: Royalty-Bearing Biological Intelligence.



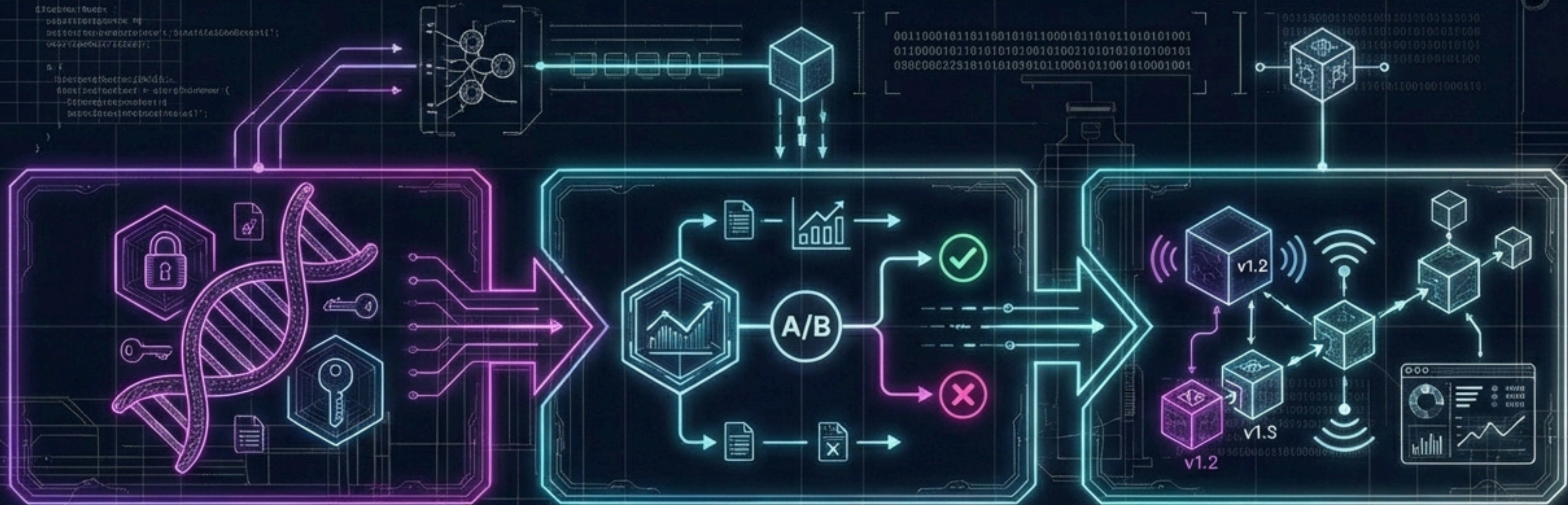
High-confidence models wrapped into IP-NFTs with programmable royalties.

Pharma & Clinics license
IP-NFTs for targeted use.

Royalties flow to holders,
users, labs, and protocol.

DEPH = Utility.
IP-NFTs = Regulated Assets.

Model Lifecycle: From Prototype to Production.



PROTOTYPE

Trained on limited cohorts via ZK queries; strict governance.

EVALUATION

Tested on held-out data; underperformers rejected.

PRODUCTION

Deployed as versioned agent routines; monitored on-chain.

DEPH Token: Utilities & Value Flow

Utility first, real yield from real-world biology.

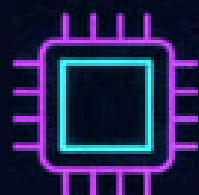


Core Utilities

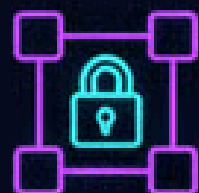
utility



Gas & Execution – “All L1 transactions and HealthID operations.”



ZK Compute Fees – “Fuel for privacy-preserving queries and training jobs.”



L1 Staking – “Securing the sovereign bio L1 via validators and delegators.”



Governance – “Voting on fees, treasury, and rail parameters.”



Protocol Take & Yield

real yield



Digital Pipe – “20% share on app subscriptions and digital services.”



Logistics Pipe – “30% margin on labs, kits, and logistics.”



Split – “Protocol revenue: 50% burn (scarcity), 50% treasury (growth).”



Rewards – “Fees flow to validators and vertical staking pools; no passive yield.”

DEPH has fixed supply and no inflationary emissions; value accrues via usage, protocol fees, and burn, not speculation.

Token Allocation & Matrix

COMMUNITY: 50%

ECOSYSTEM: 25%

STRATEGIC PARTNERS: 15%

TEAM: 10% (4-year vesting)



Total Supply: 369,000,000 DEPH (Fixed). No Inflationary Minting.

PROTOCOL REVENUE POTENTIAL

Combined Users

10,000

Monthly Protocol Revenue

\$200K/month

Annual Revenue

\$2.4M/year

Combined Users

50,000

Monthly Protocol Revenue

\$1M/month

Annual Revenue

\$12M/year

Combined Users

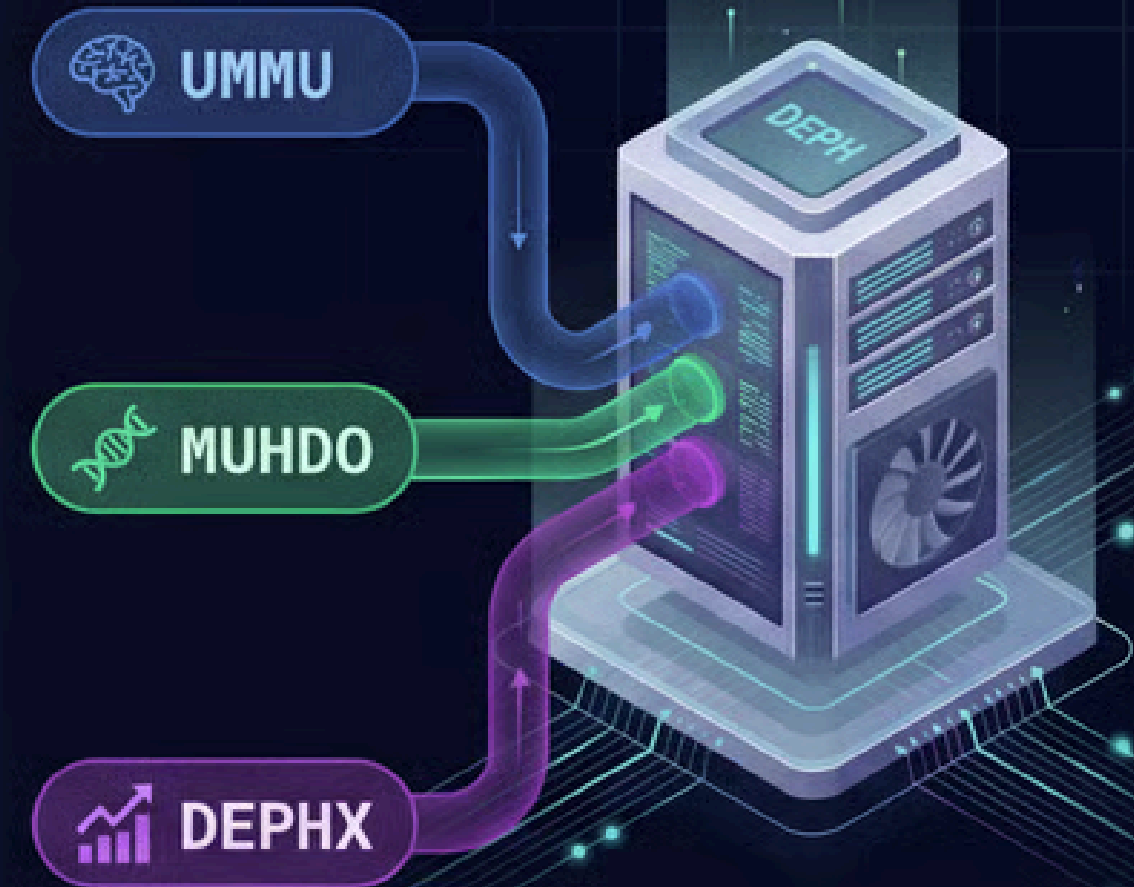
100,000

Monthly Protocol Revenue

\$2M/month

Annual Revenue

\$24M/year



PROTOCOL REVENUE SPLIT: 50% → Token Burn (Deflationary), 50% → DAO Treasury (Development).
No Passive Yield. Rewards strictly for active validator nodes.

Application Tokens on DEPH Rails



UMMU – Women's Health

Priority access, feature unlocks, local governance.



DEPHX – Performance

Priority access, feature unlocks, local governance.



MUHDO – Epigenetics

Priority access, feature unlocks, local governance.



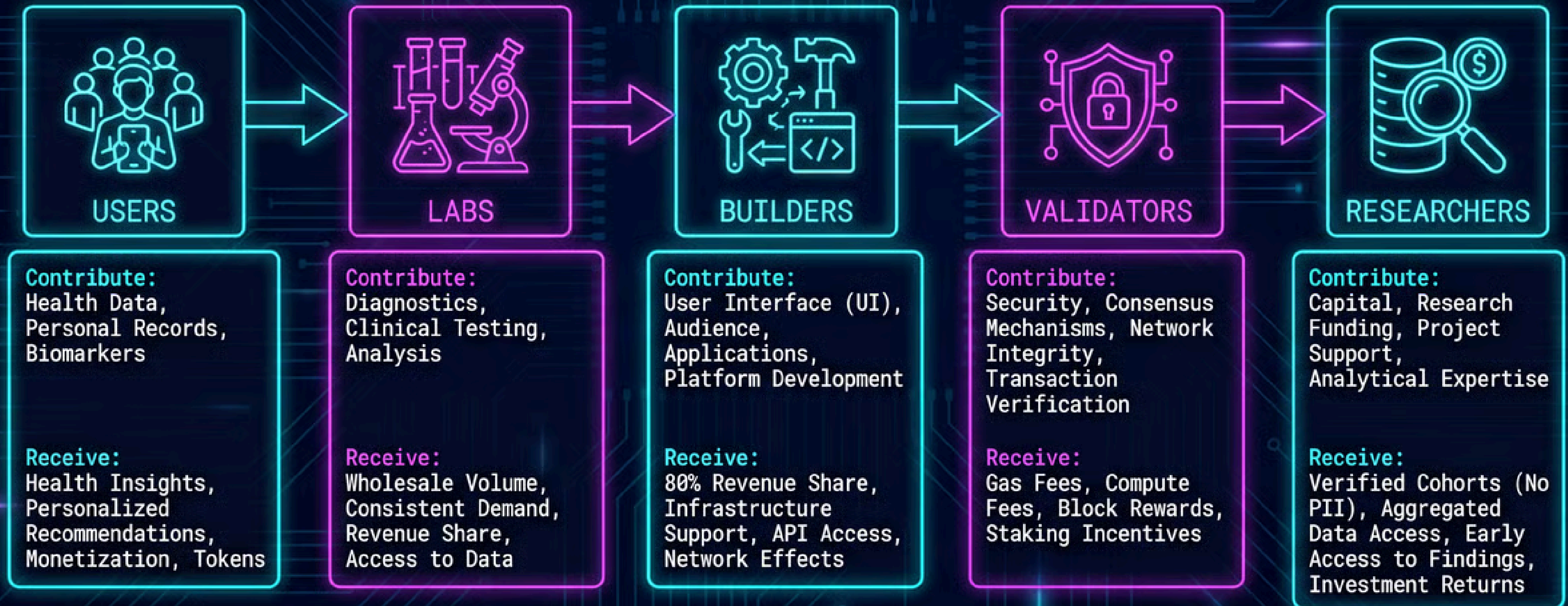
DEPH – Sovereign L1
(Settlement & Security)

All net value and fees ultimately clear in DEPH at L1.

How App Tokens Work

- Optional L2/app tokens for UX, priority, and vertical governance.
- DEPH remains the shared gas, staking, and protocol-fee asset.
- Firewall: app tokens have no claim on IP-NFT cashflows.

NETWORK STAKEHOLDERS & VALUE EXCHANGE



Firewall: Money Legos vs IP Legos.

DEPH TOKEN (UTILITY)



Gas, ZK compute,
staking, governance.



No direct claim on
IP cashflows.



Permissionless.

FIREWALL

IP-NFTs (SECURITY)



Regulated, royalty-
bearing contracts.



KYC/AML-gated.



Compliance surface
for institutions.

Built For Regulators, Designed To Win.

Risk Mitigation



- **Data:** PHI off-chain. Chain sees only proofs.



- **Model:** Lifecycle controls & expert committees.



- **Validator:** Slashing for downtime.

Roadmap Timeline.

2026



Scale UMMU, MUHDO, DEPHX.

2027



**Activate IP Marketplace.
Mental/Metabolic Verticals.**

2028



Default global rail for biological AI settlement.

Already Operating at Bio-Scale

80,000

Epigenetic tests processed
through the rails

Epigenetic tests processed
through the rails

300+

Partner clinics worldwide
integrated into DEPH logistics

Partner clinics worldwide
integrated into DEPH logistics

3

Live app rails:
UMMU, MUHDO, DEPHX

Live app rails:
UMMU, MUHDO, DEPHX

Protocol fees already generated via digital rake and cost-plus logistics.